

Passionate about wood veneer





Mission

Here at Decospan, we develop and manufacture wood veneer based products. We do this in a creative and innovative way with respect for nature and the environment.

Vision

Decospan aims to make wood veneer products more accessible by taking the finishing further. We add value so that you can easily convert them into the desired end products. In fact, we make it just as easy to use veneered panels as melamine panels.

A sustainable business model

But quality isn't everything. At Decospan, we make efforts every day to reduce our impact on the environment and our ultimate aim is to neutralise that footprint entirely. That is a high priority for us and we have developed a sustainable business model to achieve it:

- To start with, we purchase wood from well-managed forests. We check the source of our veneer wood through our PURE WOOD charter or via an official certification body such as FSC® or PEFC™.

- We also aim for CO₂-neutral production.
- Finally, we manufacture products that have the least possible impact on the environment and that can be easily recycled at the end of their life.

We give this vision concrete form by giving all our staff professional training. This way, everyone at Decospan can help with ideas in our quest for sustainability and quality.



Values

Passion

The Decospan family is passionate about wood and we try to pass on that passion to all our staff and everyone who is involved in our business.

Aiming for an integrated quality system

Our aim is to deliver quality, day in day out. That is only possible if everyone in the company works together. That is why we encourage all our staff to come up with ideas that will help us achieve our vision of only aiming for the best. For us, pursuing maximum quality is a multi-faceted task, ranging from the key operational processes down to the last detail.

1. Quality in the products

Decospan aims to deliver high-quality products that satisfy the most stringent requirements set by our customers. That is why we are continually investing in the most modern machinery, storage systems, etc. Whenever we consider an investment, we ask ourselves, "Will this benefit our customers?"

2. Quality in the service

The key concept in our customer service is communication. Achieving the desired quality depends on proper communication, starting from the initial customer's requirements down thru production. Our service naturally includes fast delivery times, a well-trained team and the speedy resolution of any complaints.

3. Quality in the work

Decospan seeks to create the optimum working environment - ergonomic controls for machinery, safe, comfortable working clothes, good secondary conditions and so on. All these things make the work less stressful. We also make substantial investments in workplace safety in order to prevent accidents.

Honesty and openness

Decospan is a reputable company that seeks to be fair in all its dealings with its partners. We don't hide problems, we prefer to be open about them and solve them. Our Pure Wood charter puts our fair procurement policy into practice, for instance, and we have nothing to hide in our production either. Indeed, we invite all our customers to take a look inside our production sites.

Entrepreneurship

Decospan wants to be a company where people can develop themselves. We believe that everyone should get the opportunity to use and develop his or her talents. That is only possible if both employer and employee continuously invest in the relationship, where everyone can be entrepreneurial within the company itself. Decospan motivates its employees to be proactive to get the best out of ourselves.

Respect

Decospan treats its staff, customers, suppliers and all other stakeholders with respect. It also expects that respect to be mutual - in terms of materials, people and facilities.

Environmental awareness

Being environmentally aware is a very important part of our mission. Our pursuit of carbon neutrality is firmly based on both sound business as well as environmental reasons. Veneer is the foundation of all products at Decospan and given to us by the environment. By investing in the environment we invest in this fantastic natural resource and insure its use for future generations.



The environment

Sustainable business practices are a key element in our mission. Decospan not only has an environmentally aware procurement policy, it also aims for CO₂-neutral production.

Decospan's principal raw material is wood veneer. The trees that supply us with wood veneer also serve to store carbon and produce oxygen (more about why this is important on the next page). Because wood is so important, we ensure we make optimum use of this material at Decospan. We do that by working with wood veneer, i.e. thinly sliced wood. We also do everything we can to guarantee our customers that our wood comes from sustainable forests.

FSC[®] is an international, independent, non-governmental, non-profit organisation. It was set up by forestry owners, the wood processing industry, social movements and environmental organisations. FSC[®] strives for responsible forestry management throughout the world. Our certification can be checked through TUEV-COC-000884.





Products



Decospan®

PASSIONATE ABOUT WOOD VENEER

The Veneer
HOUSE

Wood consultants

FLOORING DIVISION

Par-ky®
friendly floors

A veneered parquet that combines the warmth and the unique design qualities of real wood with the benefits of laminate.

www.par-ky.com

CABBANI®
custom made parquet

High-quality parquet flooring based on a HDF or birch plywood with a top layer of 2, 3,2 or 5,5 mm in European oak which bridges the warmth and beauty of real wood with contemporary architecture.

www.cabbani.com

Clicwood®
Feel ► Click ► Enjoy!

This limited range of veneer floors makes a real wooden floor accessible to everyone thanks to the "Feel, Click, Enjoy"-principle.

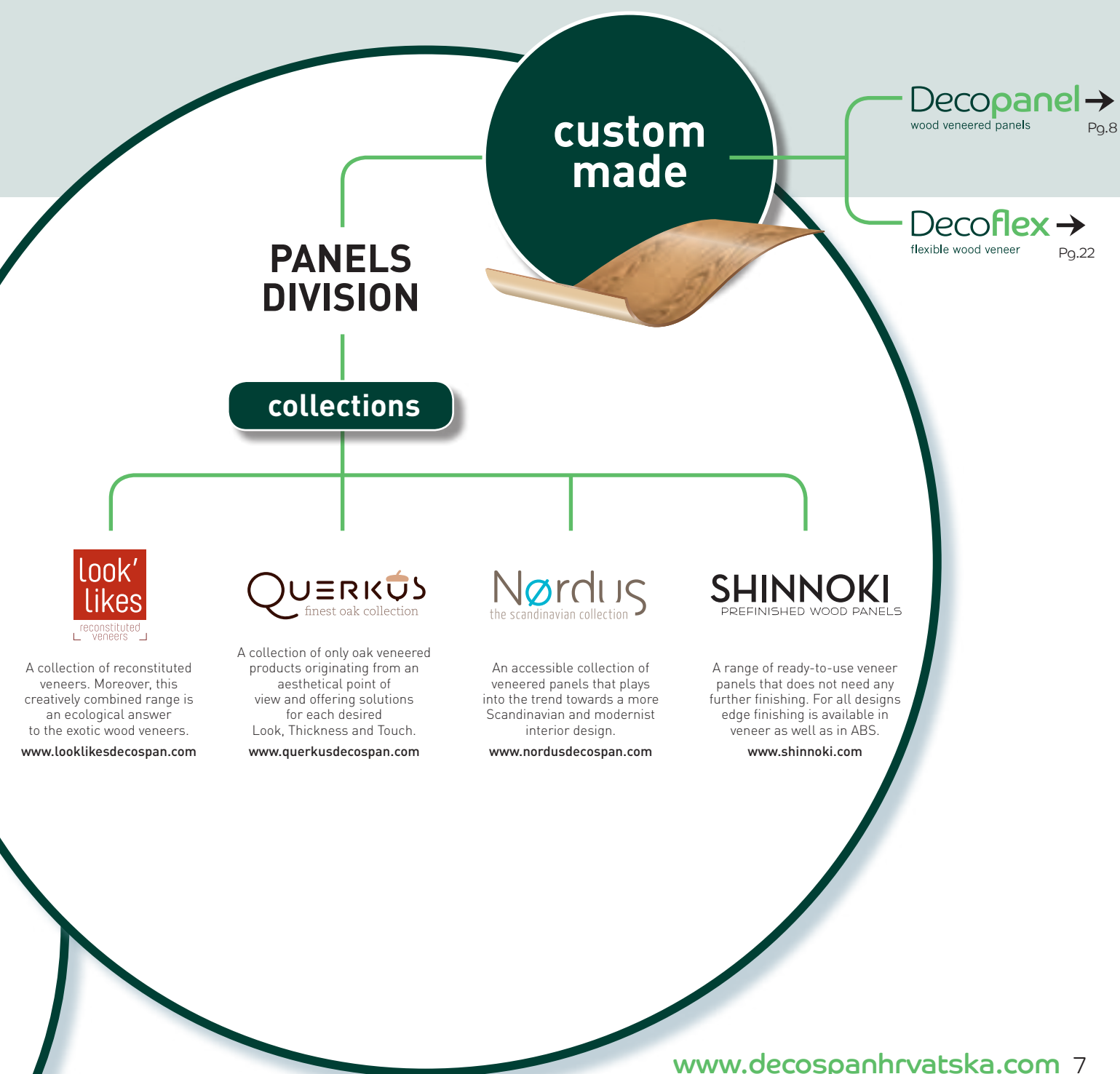
www.clicwood.com

The product range of Decospan can be divided into two families:

The division panels offers you both the option to completely design a product yourself on the basis of this guide or our online product builder, or otherwise you can rely on one of our collections. With those clearly defined solutions we make wood veneer again accessible and also simplify the processing of it. Each new collection must meet the same basic requirements: innovative, qualitatively and environmentally conscious.

The division flooring excels in flexibility and durability. Our prefinished floors give an exclusive look to any project without a drain on the budget.

For more information about the panel collections or our flooring solutions, please visit to the specified websites.

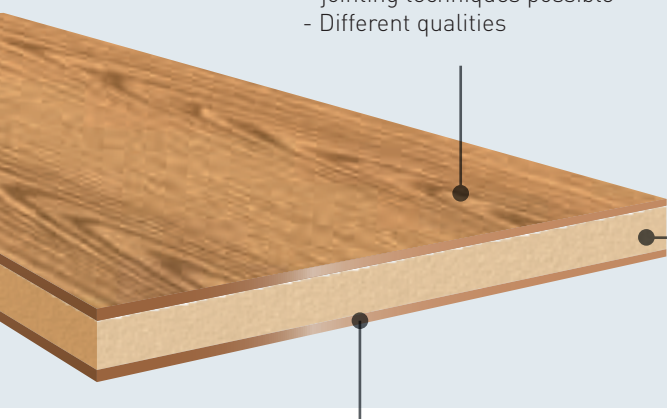


WHAT IS DECOPANEL ?

Decopanel is the product group **comprising veneered panels**.

The HPLT pressing procedure (High Pressure Low Temperature) used by Decospan guarantees the best quality for any type of panel. This unique method is the result of many years of experience in press technology and veneer processing.

When ordering a veneer panel, it is important that the right **base** and **backing** are selected. This is explained on page 10.



TOP LAYER : Veneersheet

- 150 woodspecies
- Different slicing and jointing techniques possible
- Different qualities

BOARD: Choice of **Chipboard**, **MDF board** or **Blockboard** in a range of dimensions and thicknesses.

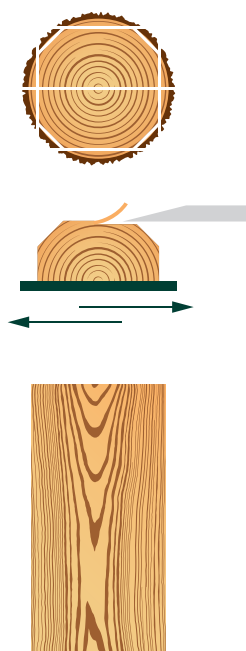
BACKING

Slicing techniques

The appearance of the veneer sheet is determined by the way we slice the wood and join the pieces together. The various ways that veneer can be sliced are shown below.

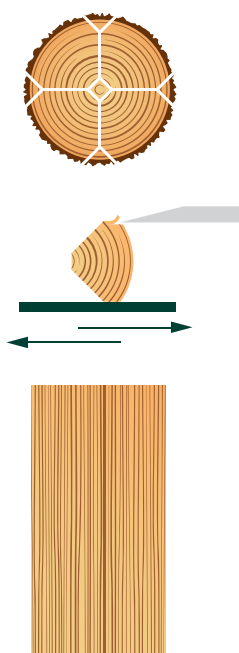
CROWN CUT

The flat sliced or crown cut, through the heart of the log.



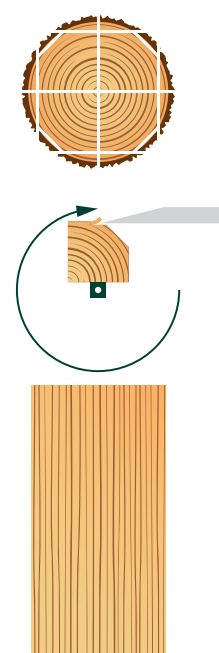
QUARTER NORMAL CUT

Straight-grained, cut at right angles to the growth rings.



QUARTER RIFT CUT

The log is rotated around its axis and the cut is made across the growth rings at a specific angle.

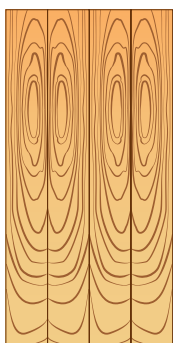


Jointing techniques

The sliced wood can be jointed thanks to modern technology.

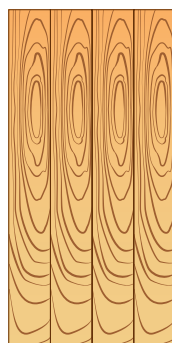
Following illustrations show the different techniques that can be used.

This lets you decide properly what your panel will finally look like and what the best choice is for your application. Whatever you choose: real wood is always unique and gives your project just that little bit extra!



BOOK MATCHED

This is the standard method. The various veneer strips are joined together in **mirror-image** pairs. This means that each strip is the reflection of the previous one. This technique lets you see perfectly how the log was handled.



SLIP MATCHED

This technique is often chosen if the veneer needs to be stained. Staining means that **no colour differences** can be seen between the different veneer strips on a panel.



REVERSE SLIP MATCHED

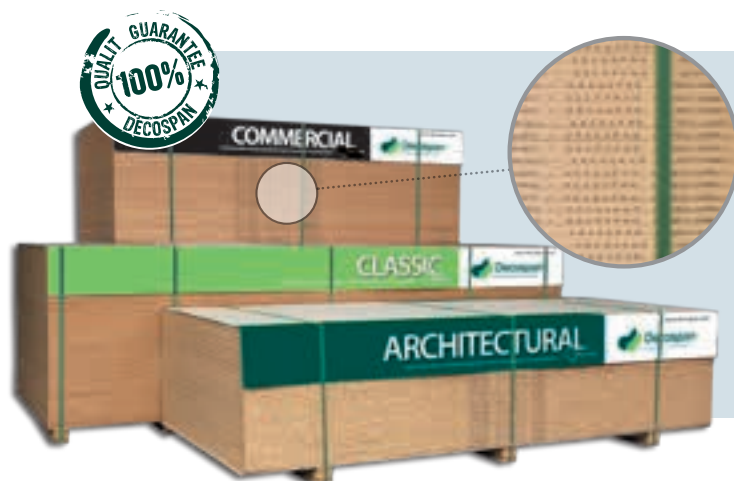
This has all the advantages of a slip-matched sheet of veneer. In addition, the boards do not all have to be the same way up. This makes it unbelievably easy for the customer to work with a veneered panel.



MIXMATCHED

Decospan has developed its own patented machine for the mix matched or planked technique, in which the veneers are jointed together randomly to give the final sheet the **appearance of solid wood** without disadvantages such as warping as the humidity varies.

Decospan can process veneers of various thicknesses in this way (0,6 mm, 1 mm, 1,5 mm and 2 mm). The thicker veneers are used when additional structuring needs to be applied.

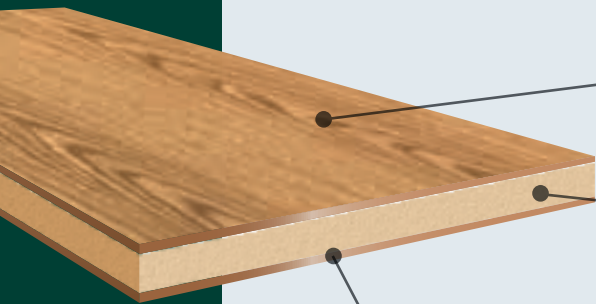


Decospan stands for **uniqueness and the most superior quality levels**. You should therefore only rely on boards that are marked with the **Decospan hallmark on the sides**. That is the only way to be certain of the best quality. The stamp also gives the production date, so that every board can be traced unambiguously.

This is how Decospan aims to stand out from the crowd and guarantee the quality !

All Decospan veneer panels are presanded with grain 120. It's the processor's responsibility to sand the panel in function of the required finishing technique.

Stock program



board

CHIPBOARD



MDF BOARD



BLOCKBOARD



in a range of dimensions and thicknesses (see table).

backing

Decospan always recommends adding a backing to your veneered panel. The backing also needs to be the same thickness as the veneer sheet on the front. This gives the panel the maximum **stability**.

To choose the right backing please find hereunder an overview:

- **Choice of 3 quality grades:** Architectural, Classic, Commercial
- **B-quality:** same type of wood as the veneer chosen for the front but in a lower quality. Rest sheets are possible and sapwood to a limited extent.
- **Mill's choice:** for applications where the backing of the panel is not seen, whatever suitable wood may be used to stabilize the panel. Sapwood and open defects may be used without limitation.

BOARD		4 mm	6 mm	9 mm	13 mm
DIMENSIONS	2440 x 1220 mm	MDF	MDF		
	2500 x 1240 mm				
	2500 x 1250 mm				
	2800 x 2070 mm	MDF		CHIPBOARD MDF	CHIPBOARD MDF

Fire-resistant and moisture resistant solutions on demand.

top layer

5 WOOD SPECIES



3 QUALITIES

ARCHITECTURAL

These are uniform trunks of a pure quality, with successive batches of veneers processed for their visual quality. The panels are numbered so that they can be used successively to let the patterning progress smoothly. In other words, the pattern gradient is continuous. They can be crown cut or quarter cut, using unblemished logs with an attractive design and structure. These are processed into at least three batches of veneer.

CLASSIC

This is the classic variant, which meets the quality requirements of most applications. It is pure wood veneer, with a number of characteristics that are specific to the wood and are in no way disruptive to the appearance. You can expect a certain similarity in the wood patterns here, but not to the same degree as for Architectural.

COMMERCIAL

This grade produces boards with more expression and more of the typical properties of the wood. These panels have a less regular structure with colour nuances, smaller series, and more knots. The trump card for these panels is their favourable pricing.

Detailed information see pages 12-21

FINAL THICKNESS

16 mm	17 mm	19 mm	23 mm	26 mm	29 mm	39 mm
		MDF				
		BLOCKBOARD				
		CHIPBOARD				
CHIPBOARD	CHIPBOARD	CHIPBOARD			CHIPBOARD	CHIPBOARD
MDF	MDF	MDF	MDF	MDF	MDF	MDF

current matrix on www.decospanhrvatska.com



Quercus

OAK EUROPEAN

top layer



ARCHITECTURAL



CLASSIC

These images are indicative,
more images available on
www.decospanshrvatska.com

backing



COMMERCIAL





Juglans nigra

WALNUT AMERICAIN

top layer



ARCHITECTURAL



CLASSIC

These images are indicative,
more images available on
www.decospanshrvatska.com

backing





Fagus sylvatica

BEECH STEAMED

top layer



ARCHITECTURAL



CLASSIC

These images are indicative,
more images available on
www.decospanshrvatska.com

ca

backing



COMMERCIAL





Fraxinus

ASH WHITE

top layer



ARCHITECTURAL



CLASSIC

These images are indicative,
more images available on
www.decospanshrvatska.com

backing



COMMERCIAL





Prunus avium

CHERRY AMERICAN

top layer



ARCHITECTURAL



CLASSIC

These images are indicative,
more images available on
www.decospanshrvatska.com

1

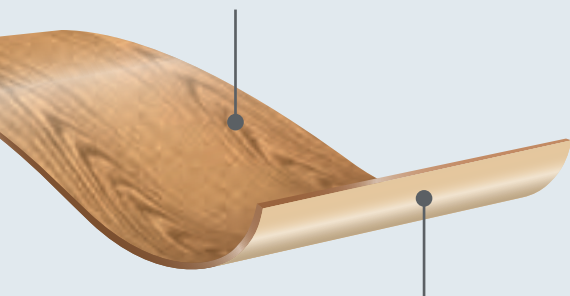
backing



COMMERCIAL



TOP LAYER: Veneer sheet



Paper balancer in the same colour as the chosen wood

WHAT IS DECOFLEX ?

Decoflex is a **jointed sheet of veneer** that is extremely easy to work with. The jointed veneer sheet is first pressed onto paper. The wood fibres are then broken and finally it is also pre-sanded with a 150 grain. This gives us a flexible sheet of wood veneer.

Applications: bended surfaces, edge bandings, doorframe veneers, pressing panels,...

The overall thickness of Decoflex is between 0,4 and 0,6 mm.



Decoflex is produced with a formaldehyde-free adhesive.

The **STOCK PROGRAM** (see table) is available in our plant in Belgium and can be shipped on a weekly basis by means of our shuttle service.

Joining technique >		BOOK MATCHED		
Wood Species	Dimensions >	2500 x 1240 mm	2750 x 1240 mm	3050 x 1240 mm
Ash white crown		AR CL		AR
Ash white quarter		AR		
Bamboo natural plain pressed		CL		
Bamboo steamed side pressed		CL		
Beech steamed		CL		
Beech steamed crown		AR		AR
Beech white		CL		
Beech white crown		AR		
Beech white quarter		AR		
Birch rotary		CL		
Cherry European crown		AR		
Cherry US		CL		CL
Cherry US crown		AR		AR
Chestnut crown		AR		
Douglas Fir quarter			AR	
Elm red crown		AR		
Iroko				AR
Khaya		AR		
Larch				AR
Maple		CL		
Maple crown		AR		AR
Oak crown		AR CL	AR	AR CL
Oak false quarter		AR		AR
Oak small mirror		CL		CL
Pine		CL		
Sapele crown		AR		
Sapele quarter		AR		AR
Sycamore crown		AR		
Teak crown		AR CL		AR CL
Walnut American		CL		
Walnut American crown		AR	AR	AR
Wenge quarter		AR		AR
Zebrano quarter		AR		
Balancing veneer – mill's choice		•	•	•

current matrix on www.decospin.com

AR Architectural
CL Classic

All other wood species or joining techniques are also available in Decoflex. Also **custom made products** or exceptional formats with **even a width of 1530 mm** can be obtained on request. As these products are made on order we need a delivery time of about 10 working days. Please take contact with a Decospan adviser.

Decoflex always comes packaged like this. This is the only packaging that guarantees Decospan quality!

When gluing the product, we strongly recommend that you follow our instructions closely. They can be found in every box and on our website www.decospin.com.



FINISHING: Staining – Lacquering

The Decospan lacquering department guarantees a qualitative finishing of your products. You can count on our **knowhow** and **flexibility** for a flawless result.

Decospan aims only products with the lowest environmental impact. We focus on a **minimal emission** of volatile organic compounds (VOC) and therefore are using only water-based stains, without harmful solvents. All varnishes are UV PU-ACR coatings without harmful emissions.

Staining

The application of a layer based on colour pigment guarantees a beautiful finishing where the colour pigment partially penetrates in the fibers while the structure of the wood remains the same. Furthermore, your veneered panels obtain a consistent colour due to our controlled methodology and advanced technologies.

Our team of colour specialists can also develop personalized colours. This enormous flexibility ensures that you don't need to worry about the finishing of your veneered panel.

Lacquering

Each veneer panel should be treated to protect the surface against damage or stains.

Our UV-lacquering installations allow 3 different finishes, depending on the application.

The main advantages of UV-hardened varnishes are strength and processability: the finishing coat is dry at one so that the panel can be processed immediately.

GLOSS		ISO 2813
5 = super matt		±2
10 = matt		±3
20 = satin gloss		±5
30 = silk gloss		±5
>30 = on request		

Length x Width / mm		min. 450 x 100 mm max. 3200 x 1250 mm
Thickness / mm		min. 4 mm max. 60 mm

STAINING	On demand			750 m ²	
LACQUERING	Surface finishing			Open grain	Closed grain
	PARQUET	EN 14354 PARQUET Flooring applications	◆◆◆	Gloss 5 -> 50	Gloss 5 -> 50
	FURNITURE	DIN 68861-1B PERFORMANCE Horizontal use	◆◆	Gloss 5 -> 50	Gloss 5 -> 50
		DIN 68861-1C NATURAL TOUCH Vertical use	◆	Gloss 5 -> 30	Gloss 5 -> 30
				M.O.Q. 50 panels	



Decospan d.o.o.
Savska ulica 158, Oprisavci
35213 Oprisavci
Croatia
+385 35 215 750
info@decospan.hr

www.decospanhrvatska.com

© Decospan 2017 - Nothing from this brochure may be reproduced without written prior permission.

Please note that the information in this brochure may be outdated and a new version may already have been issued. That is why we recommend you to always consult our website to download the most recent version. The photos of the different wood species, as shown in this brochure, are a representation of a unique part of wood and are not binding for future deliveries.

Decospan is committed to the continuous improvement of its products and services, therefore the actual products may differ from the products and pictures in this brochure. Decospan disclaims any liability pursuant to the variations that may occur between the products and pictures in this brochure and the actual products. All content in this brochure is for information purposes only and no rights can be obtained therefrom.

The processor is always expected to do an incoming inspection of the products before further processing. Once the processing is started (sawing, sanding, staining, lacquering...) the delivery is considered as accepted. All treatments as to staining and lacquering of a veneered panel is beyond the responsibility of the manufacturer Decospan.

